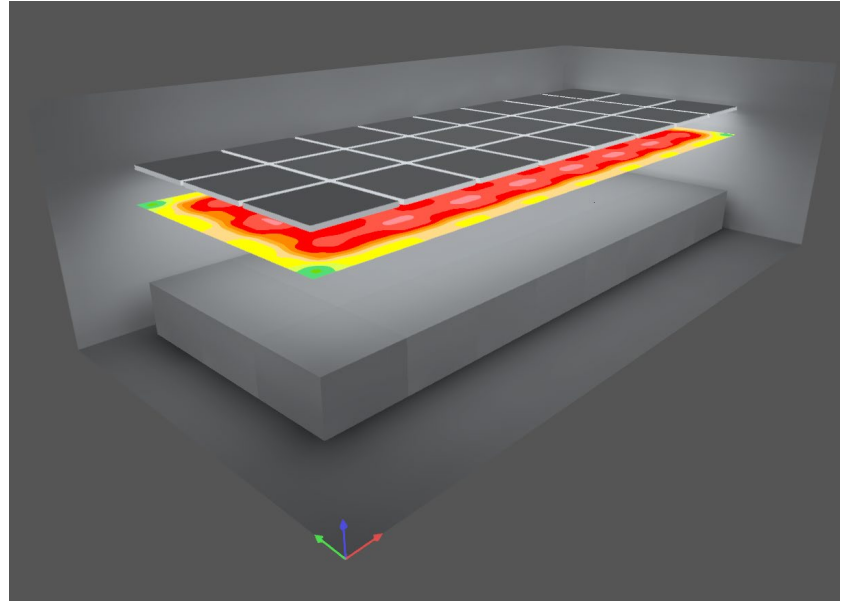


# BIOS Li2

## Flower Room 1 Overview

### THE ONLY GROW LIGHTS DESIGNED BY NATURE

BIOS uses a biology-first approach, to engineer horticultural lighting solutions that improve the quality and quantity of crops across cultivation stages for indoor and greenhouse applications — and solves the cost and efficiency issues faced by industrial grow operations.



Flower Room 1 Layout Image



- Target Light Intensity  
1300  $\mu\text{mol}/\text{m}^2/\text{s}$
- LED to Top of Canopy Distance  
1.5 ft
- Total BIOS Icarus Li2 - 800W  
Fixtures  
27
- Average/Maximum PPFD  
1,338  $\mu\text{mol}/\text{m}^2/\text{s}$  /  
1,585  $\mu\text{mol}/\text{m}^2/\text{s}$
- Total Wattage  
21,600W
- Total LED BTUs  
73,656 BTUs
- Number of Tiers  
1
- Canopy Area  
432  $\text{ft}^2$